


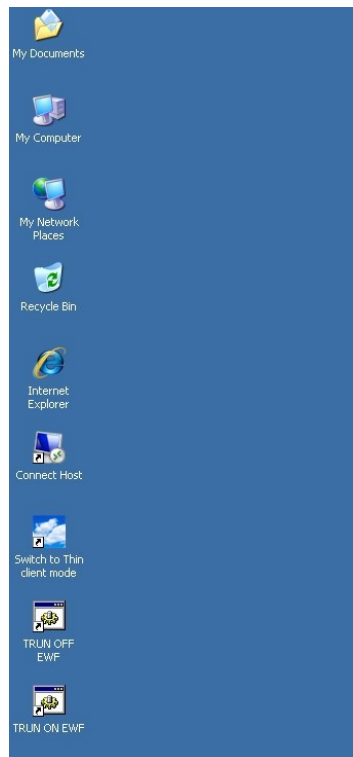
## Quick Guide of Mini Thin Client PC

Mini PC is dual working mode mini thin client pc, you can use it as Mini PC, and also you can use it as thin client only. Check the two modes quick guide here:

**Note:** Please first find  `NettcSetup_en.exe` from disk D of this mini pc, or contact Eglobal to get this software and install it in your **HOST PC** if you want to connect host.

### Mini PC mode

1. Open the mini pc you will see windows as picture 01. You can use it same as our normal computer, everything is same. If you want to use it as thin client mode, go and check the next steps.



picture 01



2. Click  button, go to picture 02.



picture 02

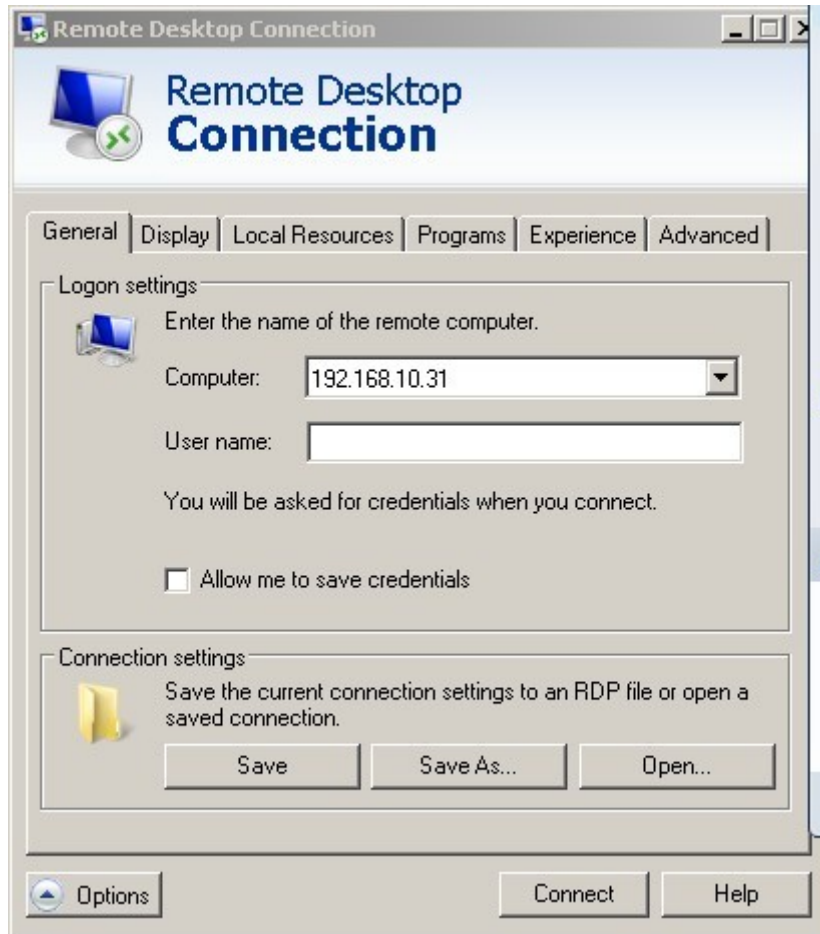
3. Enter HOST's IP address and click "Connect", input user name and password in picture 03 window, and click OK.



Pictuer 03

## Setting up for remote connecting

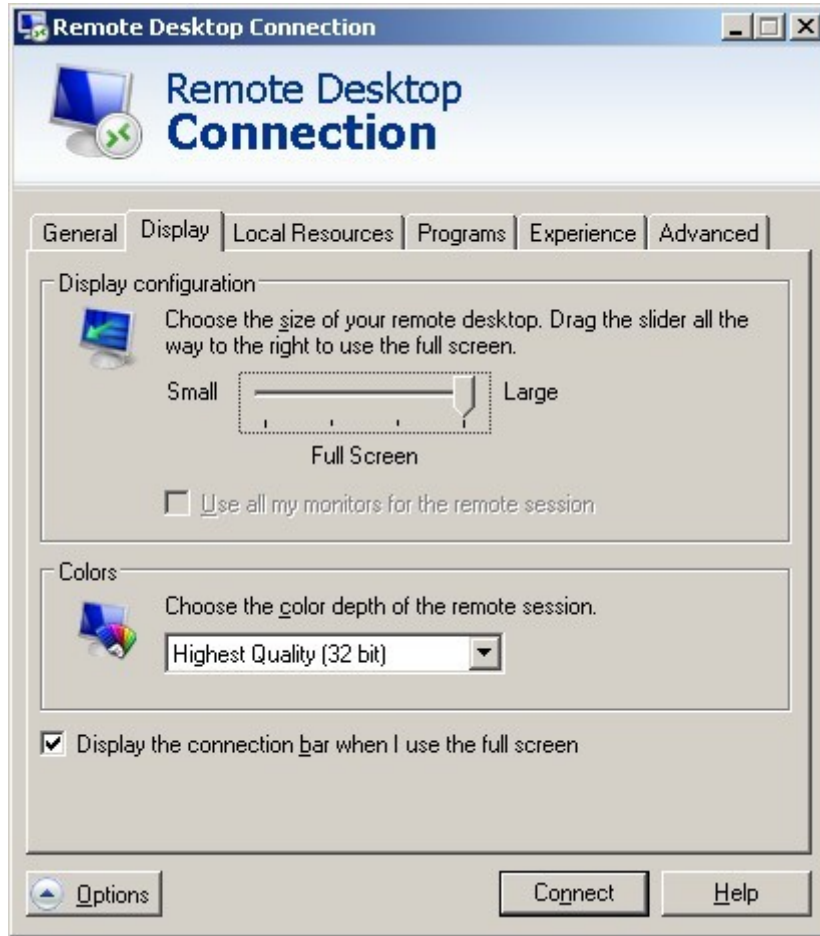
1. Connect "options" in picture 01, and open the option window as picture 04



Picture 04

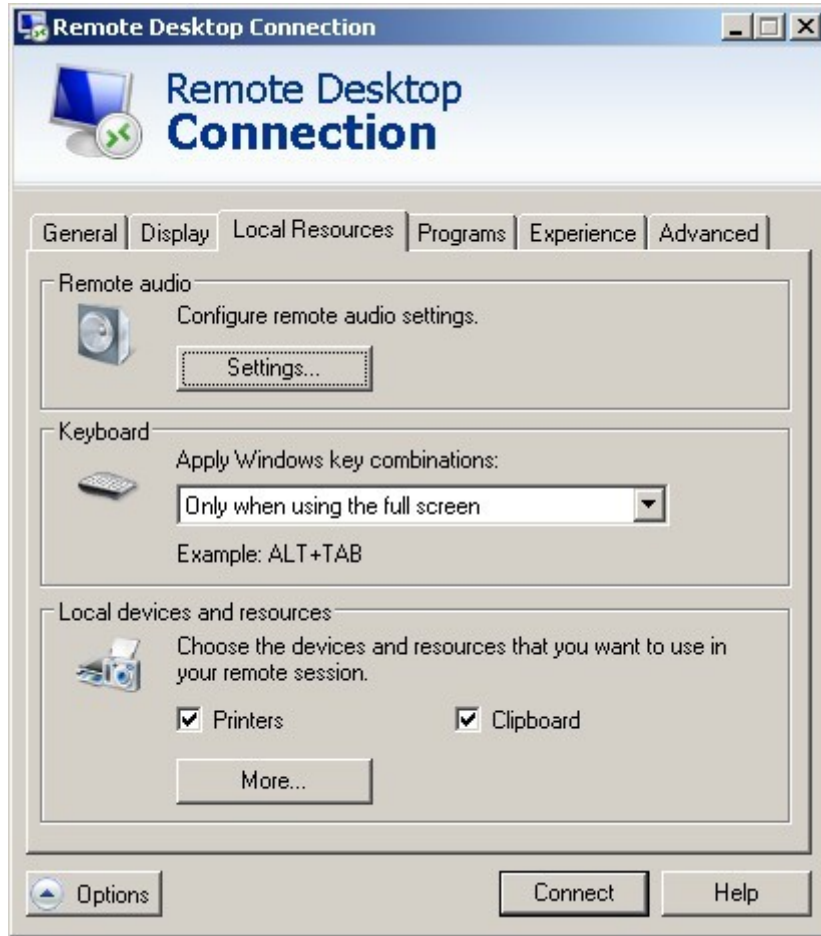
**General:** You can save HOST information here, so when connect to host, you won't need to input it again.

**Display:** see picture 05, you can make changing of screen showing here.



Picture 05

**Local Resources:** check picture 06, you can enable or unabled local resources like USB flash, printers and so on.

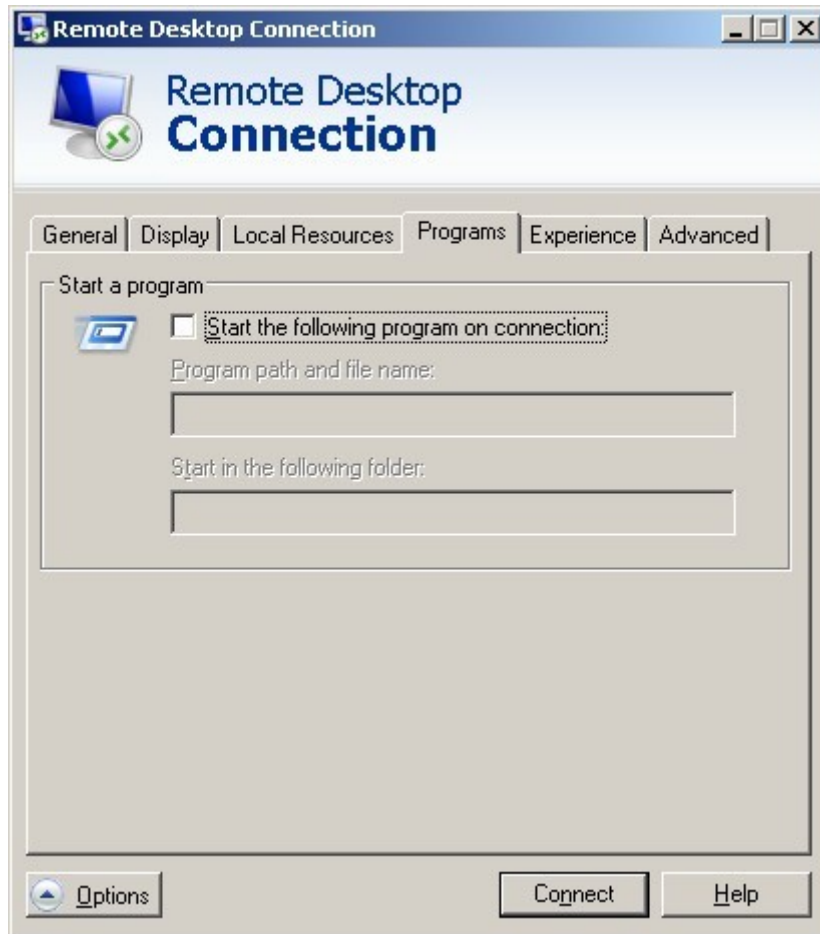


picture 06

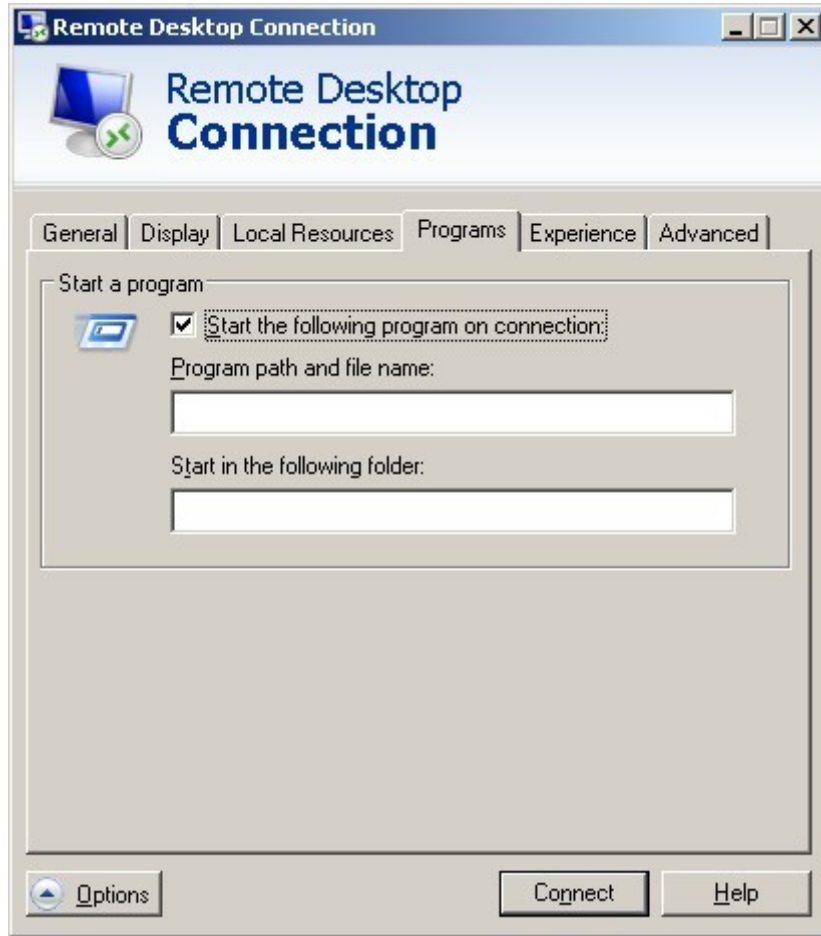
Remote audio set click "Settings" in picture 06, you can choose whether to play host's audio on this mini pc.



**Program:** Check picture 07, if you have program that need auto run when open the mini pc, you can select "Start the following program on connection", and them put the program name there.

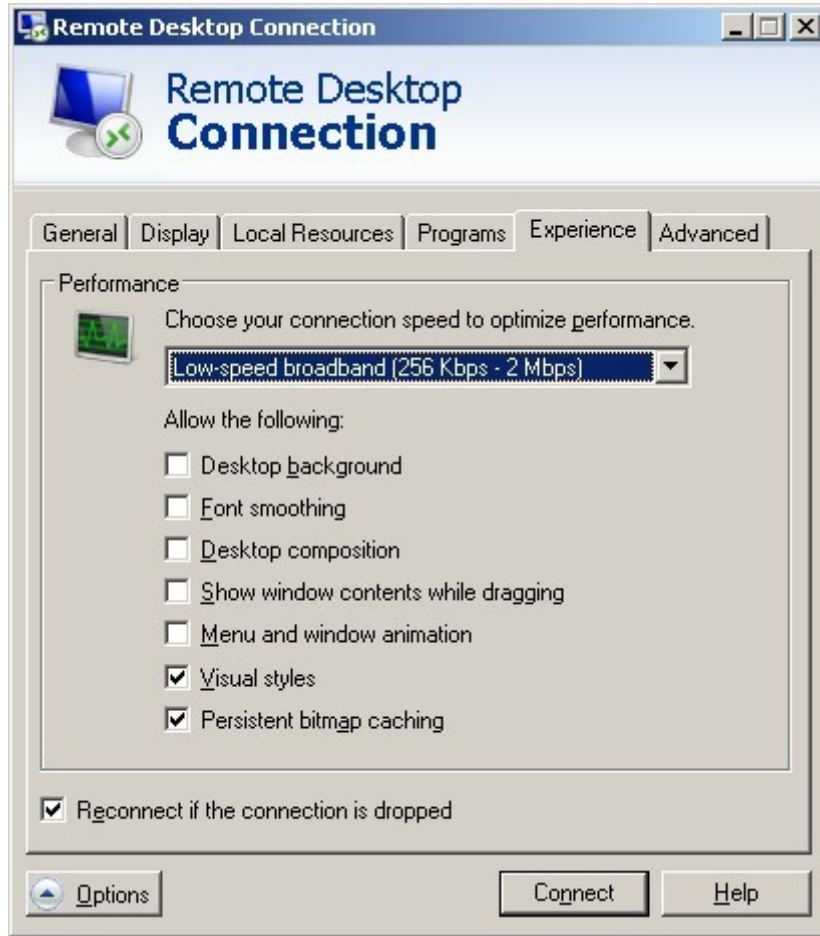


Picture 08



Picture 09

**Experience:** you can choose your connection speed to optimized performance



Picture 10



Advanced:



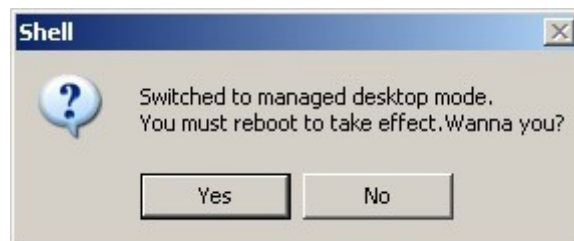
Picture 11

### Thin Client mode

If you want to use this mini pc as thin client only, you can change to Thin Client Mode first:



Click in picture 01, you will see the notice as picture 12, click "Yes" and the system will restart.



Picture 12

After restart, you will see the thin client mode only:



You can click "Shut down" in "Options" button, if you shut down this mini pc under Thin Client mode, it will be Thin Client mode always when you restart it, if you want to change back mini pc mode, click "Switch Desk" will be OK.

Please contact [engstein314@yahoo.com.cn](mailto:engstein314@yahoo.com.cn) for more technical support,  
and contact [eglobal2009@gmail.com](mailto:eglobal2009@gmail.com) for more business cooperation.  
Thank you very much.

Eglobal Technology Co., Ltd  
By [Kelly Shaw](#) at 2011-10-24